




FOUNDATION

WORKING FOR A BETTER TOMORROW

ANNUAL REPORT 2016



Contents

2	Working for a Better Tomorrow Executive Director's Message A Better Tomorrow - SM Foundation's Focus Areas Commitment of Support to the Sustainable Development Goals SM Foundation's Impact
8	A Better Tomorrow Starts Today Education — the Greatest Equalizer Matching big dreams with big efforts Skills that turn hopes to realities Doors to a brighter future
16	Choosing Wellness for a Healthier Tomorrow Health — the Blessings of Healthy Living Building Healthy Communities Looking after the Well-Being of our Forces Caring for Life
22	Farming Hope for a Bountiful Tomorrow Food Sufficiency through Farmers' Training Farming Hope in Communities
25	Extending a Helping Hand Operation Tulong Express
26	SM Cares Caring for Persons with Special Needs Caring for Our Environment



OUR VISION

A Philippines where everyone has the opportunity for self-improvement and the environment is sustained for future generations.

OUR MISSION

We will make targeted social investments in education, health care, livelihood and shelter to help underserved Filipinos improve their lives; and we will promote initiatives to protect and enhance the Philippines' unique and diverse ecological heritage.

We will do this by working directly with communities to give them the assistance they require, by leveraging our corporate assets to secure resources and build awareness and by engaging with strong partners to create programs that promote a cycle of positive change.

WORKING FOR A BETTER TOMORROW

This serves as SM Foundation's Annual Report covering the period of January to December 2016. It highlights SM Foundation's programs which are aligned to the United Nations Sustainable Development Goals and its positive impact to the communities wherever SM is present.

SM Foundation and its division, SM Cares, serve as the heart of SM, working for a better tomorrow for the communities it serves through its programs in education, health and wellness, farmers' training and environmental sustainability.

“While I am not big with words, I am big in my dreams and visions.”

- Henry Sy, Sr.

Executive Director's Message

Deborah P. Sy
Executive Director
and Trustee



Linda Atayde
Executive Director
for Education



Connie Angeles
Executive Director
for Health and Wellness



Cristie Angeles
Assistant Vice President
Livelihood and Outreach



Dear Partners,

Every year, we continue to be part of the inspiring journey of countless families who rise above their challenges to have a better life.

Creating Opportunities for a Better Tomorrow

In 2016, 225 youth achieved their dreams of completing their college education through the SM Foundation College Scholarship Program. Their stories of triumph amidst difficulties serve as inspiration to many. I was moved by the story of a particular student, Medjugorje Uy, who rose above her challenges — from being fatherless and making ends meet by doing odd jobs, to graduating Summa Cum Laude at the National University, with a degree in Education. She is among the 2,385 graduates who have joined the professional work force to positively contribute to a better tomorrow for the community. Her story of hope, perseverance and courage is one shared by hundreds of talented SM Foundation college scholars.

We also reached another milestone in technical-vocational education. 1,000 youth nationwide had the opportunity to develop technical-vocational skills through formal training. There are many youth in our country with limited means to complete college education, thus ending up doing temporary jobs. Meanwhile, there is a great demand for skilled workers worldwide. Through technical-vocational education, the youth are able to develop skills that match market demands, find gainful employment and help uplift their families out of poverty.

Through our partnership with the Department of Education, thousands of public school students had smiles on their faces as they entered their new fully furnished, well-ventilated classrooms, where they can learn more about themselves and the world around them. This year, left handed students now have arm chairs specially designed for their needs to help them feel more comfortable as they learn their lessons.

Tatang Henry Sy, Sr. believes that education is the greatest equalizer. SM Foundation is committed to help the youth have opportunities to harness their talents and develop to their full potential.

“Through technical-vocational education, the youth are able to develop skills that match market demands, find gainful employment and help uplift their families out of poverty.”

Choosing Wellness for a Healthier Tomorrow

Health is one of the greatest gifts to families whose livelihood depend on daily hands-on work. In partnership with the Department of Health, 13 newly renovated and upgraded public health centers and medical facilities passed the accreditation standards of the Philippine Health Insurance Corporation (PhilHealth). Patients in these rural areas may now receive quality medical care without having to travel far to be treated in city hospitals. Some of these centers are also now more equipped to provide proper care such as various physical and speech therapies for children with special needs. The Felicidad Sy Wellness Centers for Children and the Elderly provide therapeutic ambiance to help patients recuperate and feel better. To provide immediate medical care, SM Foundation continued to conduct medical missions nationwide. For this year, new equipment was added for emergency cases and diagnostic services.

Farming Hope for a Bountiful Tomorrow

2,636 families both in the urban and rural settings are now able to provide proper nutrition for their families as they grow vegetables and fruits in their own backyard. Through the farmers' training program, farmers and families learn sustainable farming techniques to help provide food on the table and even produce a little more to help augment their income. Through these trainings, more mothers can prepare simple yet nutritious meals for their families which also address under-nutrition and even malnutrition in severe cases.

Building Inclusive Communities for a Better Tomorrow

This year, 1,000 families start their journey for a better tomorrow as they opened the doors of their new, disaster-resilient homes. SM Cares, a division of SM Foundation, turned over four (4) sustainable villages to family victims left devastated by typhoon Yolanda (Haiyan). Beyond simply houses, families can gather together in common areas, enjoy games in the basketball courts and start anew through various livelihood programs.

Lastly, we continued to work with partners to help persons with special needs become productive members of our communities by raising awareness about their condition and meeting their unique requirements to function independently. Thousands walked side by side to raise awareness for the needs of children with autism during the Angel's Walk and Down syndrome during the Happy Walk events.

As the heart of SM, we work hand in hand with the communities we serve. We take part in their hopes to have a loving home, proper nutrition for their families and quality education for their children. We share one dream of a better tomorrow.



Deborah Pe Sy
Executive Director
and Trustee



FOUNDATION

A Better Tomorrow

SM Foundation's Focus Areas

SM Foundation is working for a better tomorrow in its host communities through its programs in education, health and wellness and farmers' training. Of the 17 sustainable development goals (SDGs), the foundation focuses on - (1) no poverty, (2) zero hunger, (3) health and well-being and (4) quality education. These focus areas serve as drivers to create impact to the rest of the 17 SDGs. SM Cares, the division of SM Foundation, promotes social inclusion, with programs aligned to the sustainable development goal of reducing inequalities. It also promotes sustainable communities by building disaster resilient homes complemented by a holistic community development program.



Education Opportunities for a Better Tomorrow

Fully-Furnished Public Schools

We help the youth develop to their full potential and achieve their dreams by building fully furnished public schools that are conducive for learning.

College and Technical- Vocational Scholarship Grants

We provide scholarship grants to excellent but under-privileged youth to help them soar to greater heights, help uplift their families out of poverty, be excellent in their chosen field and share their talents to contribute to their communities.



Operation Tulong Express Extending a Helping Hand

We serve as one of the first responders during calamities by giving immediate assistance to our communities in form of medicine and other basic needs. Through our nationwide presence, we are able to provide Kalinga Packs which consist of bottled mineral water, rice, ready-to-eat meals and instant noodles in a timely manner and free of contamination.



2 ZERO HUNGER



Farmers' Training

Farming Hope

We help bring back hope in farming by working hand in hand with farmers in our communities through a 12-week Farmers' Training Program. We train farmers effective backyard planting methods and small-scale farming techniques for fruits and vegetables to help provide food sufficiency and augment their income.

11 SUSTAINABLE CITIES AND COMMUNITIES



Sustainable Communities

SM builds sustainable communities by providing 1000 disaster resilient homes to Typhoon Yolanda victims. Each village has basic amenities like electricity, water, basketball courts and open areas. A holistic community development program is also in place to provide livelihood opportunities.

3 GOOD HEALTH AND WELL-BEING



Health and Wellness

Caring for Life

Medical and Diagnostic Missions

We help our communities enjoy better quality of life by caring for the sick. We conduct free medical missions which include medical consultations, basic laboratory tests and dental check-ups, with a proper and complete dosage of medicines.

Public Health Centers and Hospitals

We renovate and upgrade public hospitals, barangay health centers and other government medical facilities. In every center, we build Felicidad Sy Wellness Centers for children and senior citizens to help meet their special health needs. The renovated community health centers meet the accreditation standards of the Philippine Health Insurance Corporation (PhilHealth).

10 REDUCED INEQUALITIES



Social Inclusion

Through SM Cares, we promote social inclusion by providing opportunities and services for persons with special needs such as persons with disabilities, senior citizens, breastfeeding mothers, children and the overseas Filipino workers.



Commitment of Support to the Sustainable Development Goals

Teresita Sy Coson
Vice-Chairman



Jose T. Sio
President and Trustee



Lydia B. Echaz
Independent Trustee



Paulino Y. Tan
Trustee



Ramon Gil S. Macapagal
Trustee



Dear Stakeholders,

Wherever SM is present, we help create opportunities for a better tomorrow in the communities we serve. As a group, we continue to align our development programs to the 17 Sustainable Development Goals (SDGs) set by the United Nations. We focus our efforts in five areas namely education, health and well-being, zero hunger through farmers' training, environmental sustainability and financial inclusion. These serve as our drivers to create impact to the rest of the 17 SDGs. Of the five focus areas, three are spearheaded by SM Foundation.

We believe that education is the greatest equalizer. As such, we designate most of our social investments to provide access to inclusive and equitable quality education. This year, our education program achieved a milestone as we offered 1,000 technical-vocational scholarship grants. This allows the youth to develop the skills that match market demands and have gainful employment. We continue to help close the gap of the quality of education between private and public schools by building public schools that are fully furnished and conducive for learning.

We continue to promote health care and well-being in all the communities we serve, especially for marginalized families. To help provide access to quality universal health care, we aim to renovate and upgrade more public health facilities to meet the accreditation standards of the Philippine Health Insurance Corporation (PhilHealth). This will increase the utilization of PhilHealth cards in the rural areas, especially among the senior citizens and indigent patients. We also expanded the services of our medical missions with diagnostic services by upgrading and adding equipment in the mobile clinic. Through this, our communities may feel secure that their medical needs are met especially during critical seasons of their lives.

Lastly, through SM Foundation's farmers' training program, we aim to help address the issue of food sufficiency among the farming communities and among the urban poor. By equipping farmers and families with simple but sustainable backyard farming techniques, they are able to grow their own source of nutritious food for their family. We are also looking into scaling our initiative by linking farming cooperatives to the market.

It is our desire that our communities grow along with us, as we continue to weave sustainable development in the fabric of our business. Through the SM Foundation's socio-economic and environmental programs, we can create shared value for all our stakeholders and our communities.

Ramon Gil S. Macapagal
Representative of the Board of Trustees

Opportunities for a Better Tomorrow



15,389
farmers trained



124
KSK farmers' training conducted for farmers from

2,315 **616**
barangays in municipalities and cities



128
public health and medical facilities renovated and upgraded



1,238
medical missions conducted for
937,562
patients



3,637
college scholars

1,644
technical-vocational scholars



28
repaired with
76 classrooms

80
school buildings with 248 classrooms donated equipped with

12,450
student desks

498
blackboards

248
wall clocks

248
teacher's desks

990
wall fans

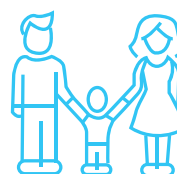
248
water closets



1,000
disaster resilient new homes for victims of typhoon Yolanda (Haiyan)



257,155
families served



536,479
trees planted



A Better Tomorrow Starts Today

09 Education — the Greatest Equalizer

.....

10 Matching big dreams with big efforts

.....

12 Skills that turn hopes to realities

.....

14 Doors to a brighter future

Education

The Greatest Equalizer



“You are young with the future ahead of you. If I can do it, then the young people of today can do it too.”

— Tatang Henry Sy, Sr.

In the Philippines, only about 23% of the students who start in Kindergarten actually make it to college education. Apart from being unable to afford the tuition fees, many youth also cannot afford to devote four to five years to studying rather than working. As such, the youth cannot develop to their full potential. Their opportunities are limited to temporary jobs which extend through majority of their adult life. This makes it harder for them to break the cycle of poverty in their lives.

SM Foundation founder and patriarch, Henry Sy, Sr. believes that education is the greatest equalizer. His approach was simple and practical — that if he could send one child to school, that child can help his/her siblings to school, and together, they

can uplift their family out of poverty. SM Foundation Executive Director for Education, Linda Atayde, is a witness to this testament as the college scholarship program expanded from having only 100 scholars to more than 5,000 college and technical-vocational scholars nationwide.

With a primary focus on education, SM Foundation has a two-pronged approach in helping provide quality education for all. First, by providing scholarship grants both to college education with a guaranteed job in the SM group as an option for the scholars to take and to technical-vocational education with industry partners for job placement. Second, to help provide quality public education by building fully furnished school buildings.

2016 IMPACT



1073

technical-vocational
scholars in 32
partner schools



5 school buildings with
20 classrooms donated



13

school buildings
repaired with 30
classrooms



225

scholar-graduates



1,236

college scholars
in 91 partner schools

College Scholarship Program

SM Foundation designates most of its resources to the college scholarship program. Each scholar enjoys full tuition subsidy and a monthly stipend. During summer, they are offered on-the-job internships within the SM group. Upon graduation, they have the option to accept the guaranteed full time jobs in SM under no obligation to do so and are encouraged to pursue the best opportunities available to them.

FEATURE STORY: MATCHING BIG DREAMS WITH BIG EFFORTS

Waking up to the stench of piled trash was Medjugorje Uy's reality every day. Born to a humble family, Medjugorje knew how hard life was and decided that she had to do everything to change her future. Her plight completely changed when she was awarded a full college scholarship grant by SM Foundation.

At 19 years old, she graduated summa cum laude from the National University with a degree in Education, major in English. For Medjugorje, SM Foundation has become a big part of her life as she was given the opportunity to prove herself and work hard to make her dreams come true.



"I am one of the thousands who were affected by Tatang and his family's hard work. I am a proud SM Scholar who hopes of being like Tatang in the future and serve as an inspiration to the youth."

— Medjugorje Uy, SM Foundation Scholar
Currently the Building Administration Officer,
SM Center Sangandaan

Honors Of Graduating Class 2016



4

Summa
Cum Laude



11

Magna
Cum Laude



48

Cum Laude



13

Academic
Distinctions

FEATURE STORY: A QUEST FOR HIS DREAM

His story is like a movie script of struggle, despair and triumph. Born to a simple family with very meager means, Joebert thought life couldn't get any worse, until his father was shot. Everything grew dimmer as they coped with the emotional turmoil and pain, coupled with financial challenges. Yet in his despair, he mustered his courage to take on life's trials head

on. With his faith in God and in himself, he worked hard and graduated cum laude from Notre Dame of Dadiangas University in General Santos, completing Bachelor in Education, Major in Science. Now a teacher, he inspires his students to have a dream and work hard to be all that they could ever hope to be.



Technical-Vocational Scholarship Program

Skills that turn hopes to realities

In 2016, SM Foundation awarded 1000 technical-vocational scholarship grants nationwide. Technical-vocational education is a viable option for the youth to acquire skills that match market needs and find gainful employment in the country and abroad.



Conquering a man's world as a fitter-machinist

Raised in a family of six children by a single mother, Caren Narvaja had very little opportunities for a brighter future. But with much faith, she held on to her dream of a better tomorrow. After completing the Alternative Learning System of the Department of Education, Caren was given the opportunity to pursue further studies. Today, she is a proud technical-vocational scholar of SM Foundation training as a fitter-machinist at the Don Bosco Technical Vocational Education and Training (TVET) Program.



Giving a fighting spirit a fighting chance

Marvin Cabilic feels like he was given a second chance in life. After surviving the devastation left by Typhoon Haiyan in his hometown in Palo, Leyte, he never thought that he could get past another day. But just as it is darkest before dawn, it was when he was at his lowest point that a ray of hope shone on him through a scholarship grant from SM Foundation. Today, he is studying to be an Automotive Mechanic at the Don Bosco TVET Program. His sacrifices are behind him and he can look forward to a brighter tomorrow.





SPECIAL REPORT: MOVING FORWARD WITH TECHNICAL-VOCATIONAL EDUCATION



The trends in globalization and ASEAN integration has brought into the forefront numerous issues related to the economic sustainability of emerging markets. Specific skills have gained market demands to help industry grow. However, there is a big gap between the skills in the market place and the skills required by industry. As such, the need for technical-vocational skills education and training re-emerged, with the transition to K to 12 program rolled out by the Department of Education.



In 2016, SM Foundation offered 1,000 scholarship grants for technical-vocational education and training (TVET). SM Foundation sees TVET as a viable option for the youth to develop their skills allowing them to qualify and work in industries here and abroad. This also provides a quicker alternative to college education, which allows the youth to work and help their families financially.

School Building Program

Aligned to the Sustainable Development Goal to provide access to quality education, SM Foundation helps narrow the gap of the disparity between private and public education by building fully furnished school buildings. A typical school building has two levels with four classrooms. Each classroom comes fully furnished with 50 student arm chairs, one teacher's desk set, two blackboards, four wall fans, a clock and a fully functioning washroom. By providing a conducive environment for learning, public school students are able to focus on their lessons, have room to develop their creativity and take little steps towards their dream.

FEATURE STORY: DOORS TO A BRIGHTER FUTURE

The world became brighter for the students of the Manuel L. Quezon Elementary School as they entered their new classrooms, with the mountains of Baguio as their view.

All students now have their own chair, giving them space to grow and dream. The teacher now has two blackboards to write valuable lessons on.

And children now have adequate wash rooms for better hygiene.

SM Foundation helps open doors to a brighter future for public school students by providing classrooms that are conducive for learning. Each classroom that SM builds serves as a place of growth, creativity and self-discovery.



SM builds classrooms that stimulate creativity and love for learning.



An Arm Chair for Every Student

In every classroom that SM Foundation builds, the needs of the students are top priority. SM Foundation makes sure that each student has his or her own chair and their personal space where they can learn, grow and dream. In every classroom of 50 chairs, 5 chairs are designed to meet the needs of left-handed students.



Well-Appointed Teaching Spaces

Teachers serve as role models to the students. They play a very critical role in each child's development and character formation. Each classroom comes with two big blackboards and a teacher's desk set to help teachers teach effectively.



A Conducive Environment for Learning

Having a stimulating environment plays a big role in a child's learning capacity. SM Foundation makes sure that each classroom is comfortable, well-ventilated and properly built. Each classroom is designed with windows on opposite walls to facilitate air circulation and are furnished with wall fans.



Proper Hygiene and Safety

Each classroom has a fully functioning washroom with water closets to promote proper hygiene. To facilitate movement especially in case of an emergency, each classroom has two big doors, while each building has two main staircases.



Choosing Wellness for a Better Tomorrow

17 Wellness — the Blessings of Healthy Living

18 Building Healthy Communities

19 Looking after the Well-Being of our Men and Women in Uniform

20 Caring for Life

Health and Wellness

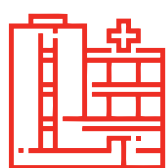
The Blessings of Healthy Living

Having good health is a priceless gift that is taken for granted until one gets sick. Access to quality health care is critical for the development of healthy communities and cities. Particularly in marginalized communities, health is key to livelihood. For every day that a person with informal means of livelihood is sick, one is unable to work and unable to earn a living for that day.

SM Foundation helps build healthy communities by working together with other like-minded organizations both in the private and public sectors. Aligned to the UN Sustainable Development Goal Number 3 — Health and Well-being,

SM Foundation supports the health and well-being of its communities by (1) providing immediate medical care through the SM medical and diagnostic missions and (2) renovating and refurbishing public health centers and medical facilities to meet the accreditation standards of the Philippine Health Insurance Corporation (PhilHealth). Wherever possible, SM Foundation builds Felicidad Sy Wellness Centers for Children and the Elderly in public health centers to help meet their special medical needs as well as to provide a therapeutic ambiance to aid recuperation.

2016 IMPACT



13 health centers completed



107 medical missions conducted for
97,249 patients

Impact to Date

8,601,600

patients served annually

128

Health and Wellness Centers improved

46

Felicidad Sy Wellness Centers for the Elderly

93

Felicidad Sy Wellness Centers for Children

65



Centers assisted for Philhealth Accreditation

33



Community Health Centers

18



Out-patient Department

13



Community Based Senior Citizen Centers

57



Hospital Based Pediatric Centers

21



Military Health Facilities (Armed Forces of the Philippines)

7



Hospice Units

10



Breastfeeding Units

4



Police Health facilities (Philippine National Police)

Building Healthy Communities



Quality Healthy Care for the Communities in Concepcion, Tarlac

To enjoy good health is important to everyone. SM Foundation upgraded the municipal health center in Concepcion which now has a Felicidad Sy Wellness Center for Children and the Elderly, a reception area, a newly improved consultation room, a treatment room, a nurses' room, a records/supply room and a Tuberculosis-Directly Observed Treatment Strategy (TB-DOTS) room at the ground floor.



A Gift of Wellness for the Mothers and Children of Pozorrubio, Pangasinan

SM Foundation renovated the Pozorrubio Barangay Health Center to help address the special needs of mothers and children. It is equipped with a Well Baby Clinic for new born care and screening and an expanded program of immunization which are critical for babies 0-1 year old. It has an improved Stimulation and Therapeutic Activity Center (STAC), which provides physical and occupational therapy programs for children with special conditions.



Promoting Preventive Care at the City Health Center of San Jose del Monte, Bulacan

With the improvements done by SM Foundation, this center will requalify to complete PhilHealth Accreditation for Tuberculosis-Directly Observed Treatment Strategy and Maternity Care Package. This center also promotes preventive care through its Cancer Control Program National HIV/STD Prevention and Control Program, Expanded Immunization Program and Tuberculosis Control Program. SM Foundation believes that preventive care is the key to wellness.

Looking after the Well-being of our Men and Women in Uniform



Securing the Wellness of the Guardians of our Seas

Naval Forces Eastern Mindanao

— Naval Station Felix Apolinario Panacan, Davao City

With the Philippines having one of the world's longest coastline, the Philippine Navy plays a very critical role in protecting the country's safety and sovereignty. SM Foundation honors the devotion of our navy by renovating the NFEM Medical dispensary. It includes the transfer of ancillary sections at the posterior section of the building, which makes the patient observation rooms adjacent to the emergency room and outpatient consultation room. This allows close monitoring and provides easier access which facilitates immediate response to patients' needs.



The Best Health Care for One of the World's Best

First Scout Ranger Regiment Medical and Dental Dispensary

— Camp Tecson, San Miguel, Bulacan

The upgraded dispensary aims to provide professional medical and dental services to around 2,000 military personnel, their dependents and authorized civilians. The Scout Rangers specializes in anti-guerrilla jungle warfare, raids, ambushes and sabotage. This regiment has been boasted of as one of the world's best anti-guerrilla combat units. The upgraded facility has an operating room, emergency area, patient's ward, dental clinic and minor surgical area.



Safeguarding the Well-Being of those who Safeguard our Safety

Philippine National Police Academy Health Service Dispensary

— Silang, Cavite

SM Foundation cares for the men and women in uniform who have sworn their duty to God and country to protect our communities and our people. SM Foundation returns this commitment to care for them in order to be healthy to do their duty and to enjoy life. The newly-renovated dispensary includes a reception area, lounge, waiting area for patients, physical examination room, physical therapy room, pharmacy, records and supply room, medication room, medical chief's room, emergency room, toilets and utility rooms as well as a gender responsive Cadets Ward.

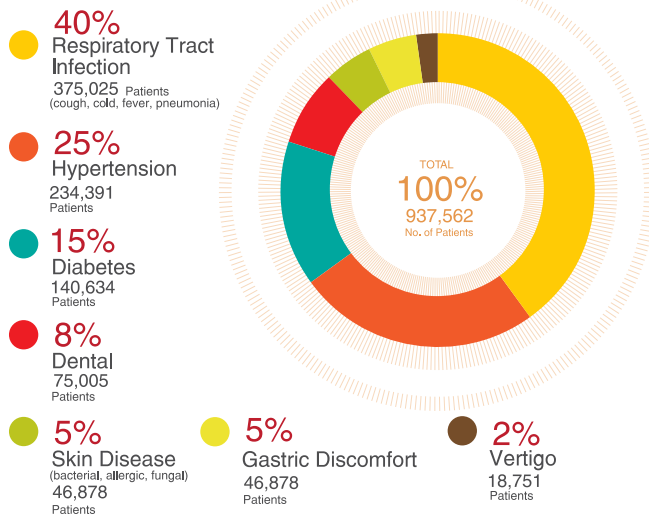
Caring for Life

Medical and Diagnostic Missions

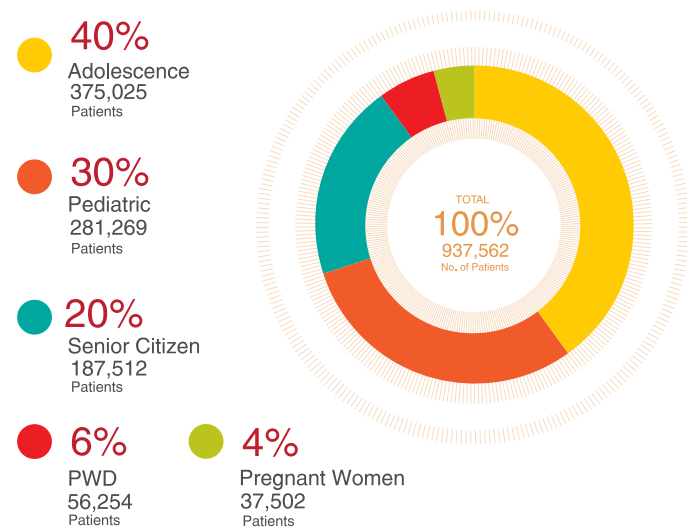
As the heart of SM, the foundation helps its communities enjoy better quality of life by caring for the sick, especially the elderly and the children who are feeling helpless about their medical condition. It provides free medical care to thousands of patients through its medical and diagnostic

missions which include medical consultations, bone density scanning, chest x-ray and ECG, dental services, laboratory exams and cholesterol and blood sugar tests, with a proper and complete dosage of medicines.

Breakdown by Diseases



Breakdown by type of Patients



2016 Impact 159,702 Patients served

X-ray
68,090
Patients

ECG
61,900
Patients

Bone Scan
18,570
Patients

Blood Sugar Test
11,142
Patients



SPECIAL FEATURE: SM FOUNDATION MOBILE CLINIC

Bringing Health Care to our Communities

The SM Foundation Mobile Clinic has become an icon wherever SM is present. It makes health services accessible to marginalized communities. This compact but fully-equipped mobile clinic is able to provide x-ray and diagnostic services. It also has a laboratory that can conduct blood sugar tests, cholesterol check and uric acid tests. It also houses an oxygen tank for emergency cases and a nebulizer for those with difficulty in breathing due to allergy and other complications. To date, there are four SM Mobile Clinics servicing communities nationwide.



In 2016, SM Foundation, added new equipment for emergency cases during medical missions such as oxygen tanks, nebulizers, blood glucose monitoring devices, cholesterol monitoring devices, pulse oximeters, otoscopes and minor surgical sets.



OXYGEN TANKS During check-ups, some patients have difficulty breathing due to severe allergy and other medical conditions. It is critical that they are provided adequate oxygen before transporting them to the nearest hospital.



BLOOD GLUCOSE AND CHOLESTEROL MONITORING DEVICE Diabetes and Hypertension can go undiagnosed. Some lose consciousness. These devices help monitor sugar and cholesterol in aid of diagnosis and treatment.



OTOSCOPE Our sense of hearing is important yet most overlooked. This is a unique service that SM Foundation added during medical missions. Untreated ear infection, especially in children, may lead to perforated ear drums and even deafness.



MINOR SURGERY SETS Some patients require minor but immediate surgery. SM Foundation tends to their immediate minor surgery needs to avoid further complication and help alleviate the discomfort of the patient. The foundation also provides a complete set of antibiotics as post-surgery supplement.



Farming Hope for a Bountiful Tomorrow

23 Food Sufficiency through Farmers' Training

24 Farming Hope in Communities

Food Sufficiency through Farmers' Training

SM Foundation helps bring back hope in farming by working hand in hand with farmers in our communities through SM Foundation's Farmers Training Program. The 12-week farmers' training program focuses on teaching farmers effective and efficient agricultural techniques for the production of high-value crops, fruits

and vegetables, both in the urban and rural settings. This helps improve the quality and quantity of their crops as well as provide safe and organic food for their families. SM Foundation also assists farmers who form associations by linking them to local markets and SM suppliers for a more stable source of income.

2016 Impact

24

farmers' training conducted

2,636

farmers trained

175

barangays

60

municipalities

1,054

participants trained on urban farming

The Trail to Sustainable Farming and Livelihood



Land Preparation

Farmers are trained the basics of land preparation, seedling management and nursery care.



Modern Farming Technology

Farmers are taught step by step care for the crops, such as trellising, pruning, organic fertilization and pest control towards a bountiful yield.



Social Entrepreneurship

Farmers also undergo lessons on basic accounting, saving, marketing and working as a team to help establish their own farming businesses.



Buyer's Forum

SM helps link enterprising farmers to the local market and suppliers of SM Markets. Farmers are also given an orientation on SM Markets' supply chain and the standards of produce offered.



Harvest Festival

After each 12-week training, SM hosts a culminating activity to celebrate the farmers' bountiful harvest.



Assistance in forming Associations

Farmer graduates are encouraged to form or join cooperatives for sustainable livelihood.

Farming Hope in Communities



Trailblazing Farming in Negros Occidental

Negros Occidental embraced sustainable farming and has exceeded its goal to convert 10,000 hectares into sustainable farmlands. In line with the province's objective, SM conducted a 12-week long training to help the farmers towards a bountiful yield. They had harvested watermelon, lettuce, patola, onion, squash and ampalaya. In partnership with the Department of Social Welfare and Development, participants who are part of the Pantawid Pamilyang Pilipino Program receive additional financial support to form cooperatives. In time, the farmers who produce enough volume are able to supply to the nearby markets or even be a source to third party suppliers of SM.



Growing Food for Urban Families

Marginalized urban communities now have a chance to grow their own food in their backyard. Just after a year since its inception, SM Foundation has trained thousands of families on backyard farming using recycled containers as planting pots. The 12-week program teaches participants new and doable agricultural techniques and methods through modular lectures and hands-on training on high-value crops. They also learn how to provide nutritious and safe food choices for their families within their limited budgets. SM Foundation helps marginalized families have continuous sources of food to curb incidents of malnutrition and live healthy lives.



Farming Crops for Tagaytay Highlands

Farmers from Tanauan, Batangas are now equipped with sustainable farming techniques and basic marketing knowledge to effectively farm in the 5,000 square meter parcel of land provided by Tagaytay Highlands. The program aims to provide a stable source of income to the farming communities in the area by supplying produce to the resort's restaurant supply chain. It also promotes farm-to-market activities by marketing to club members and residents of the area.

Operation Tulong Express

FEATURE STORY: EXTENDING A HELPING HAND

SM serves as one of the first responders during calamities by giving immediate assistance wherever SM is present in form of medicine and other basic needs. Through its nationwide presence, SM is able to provide Kalinga Packs consisting of bottled mineral

water, rice, ready-to-eat meals and instant noodles in a timely manner and free of contamination. In heavily affected areas, SM also conducts medical missions to provide basic medical care and first aid treatments.

2016 Response



148

Kalinga
Packs distributed
Caloocan Fire
January 25, 2016



1,800

Kalinga
Packs distributed
Mandaue Fire
March 12, 2016



4,000

Kalinga
Packs distributed
Habagat
August 17, 2016



11,000

Kalinga
Packs distributed
Typhoon Lawin
October 20, 2016



600

Kalinga
Packs distributed
Cebu Fire
December 1, 2016



3,615

Kalinga
Packs distributed
Typhoon Nina
December 25, 2016





SM Cares

27 Caring for Persons with Special Needs

28 Caring for Our Environment

Caring for Persons with Special Needs



Caring for Persons with Disabilities

SM cares for the comfort of persons with disabilities (PWDs) by designing SM malls to meet their needs. PWDs enjoy dedicated parking areas, special restrooms, ramps, braille signages, designated theater and dining seats. The deaf and blind also enjoy special movie screening tailored for their needs. SM Cares also raises awareness on the needs of children with autism through the annual Angels Walk and Down syndrome through the annual Happy Walk.



Caring for Senior Citizens

SM cares for the senior citizens by providing them with opportunities to rediscover their self-worth in society. Senior citizens feel a sense of community through various programs like the Casual Employment for Senior Citizens, Elderpreneurship, Oldies But Techies and annual Christmas celebrations.



Caring for Mothers, Children and Youth

SM cares for the delicate needs of women by raising awareness on breast cancer. It also supports the strong bond between mother and child by providing breastfeeding stations in SM malls.

SM also cares for the future and welfare of children. In partnership with UNICEF, more children now have access to clean drinking water. It also raises awareness on the importance of a child's over-all development by promoting access to essential nutrition and health services.



Caring for our Global Pinoy

SM cares for the needs of families of overseas Filipino workers (OFWs), the country's modern heroes. While abroad, their families may avail of services like processing international remittances, long distance calls and many others at the SM Global Pinoy Center. When they come home, OFWs enjoy seminars and workshops on entrepreneurship and financial literacy.

Caring for Our Environment



Trash to Cash

SM invites all its customers to bring their recyclable trash in exchange for cash. This campaign hopes to develop the habit of recycling. Since it started, it has a total cash out value of Php47 million.



Earth Hour

SM continued its commitment to join the world in raising awareness on the pressing issues the environment is facing by turning off its lights for one hour. It also engaged its customers through fun activities.

SPECIAL REPORT: BUILDING RESILIENT COMMUNITIES WITH CARE

1,000 families opened the doors to a better tomorrow as they entered their new homes at the SM Cares Villages. The houses are made with concrete ceilings and walls to accelerate the conventional building method and it is also equipped with proper ventilation. It can withstand severe weather conditions without major damage and are designed beyond mandated government safety standards. Each village is complete with basic amenities such as street lights, electricity, water, basketball courts and open areas. The villages are secured with perimeter gates. Today, every family enjoys a secure environment which helps them overcome their fears and inspires them to look forward to a brighter future.



SM Foundation Organizational Information

Board of Trustees

Henry Sy, Sr., Chairman of the Board

Felicidad T. Sy, Trustee

Teresita Sy Coson, Vice-Chairman

Jose T. Sio, President and Trustee

Deborah P. Sy, Executive Director and Trustee

Paulino Y. Tan, Trustee

Ramon Gil S. Macapagal, Trustee

Lydia B. Echauz, Independent Trustee

Arthur A. Sy, Corporate Secretary

Elizabeth A. Lim, Treasurer

Arlene Keh, Adviser to the Board

List of Member Associations

Philippine Council for NGO Certification

League of Corporate Foundations

Association of Foundations

External Auditor

SyCip Gorres Velayo & Co.

Audited Financial Statements

Please refer to SM Foundation Website

www.sm-foundation.org

Follow us on Twitter

@smfoundationinc

Like us on Facebook

@smfoundationinc

Follow us on Instagram

@smfoundationinc



FOUNDATION

Building B, SM Corporate Offices
J.W. Diokno Boulevard, Mall of Asia Complex
Pasay City, 1300, Philippines

E-mail: smfiadmin@sm-foundation.org
www.sm-foundation.org